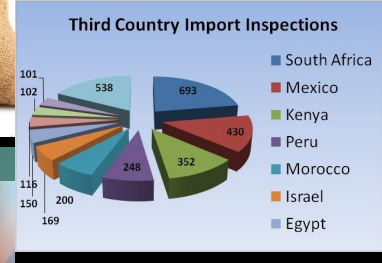




© Matteo MASPERO



Plant Health & Environment



**An Roinn Talmhaíochta,
Bia agus Mara**
Department of Agriculture,
Food and the Marine



Biosecurity & Food Safety

Horticulture & Plant Health Division

Glas 2018
Con Collis AAI



Sectoral Development



The Department of Agriculture, Food & the Marine at Glas

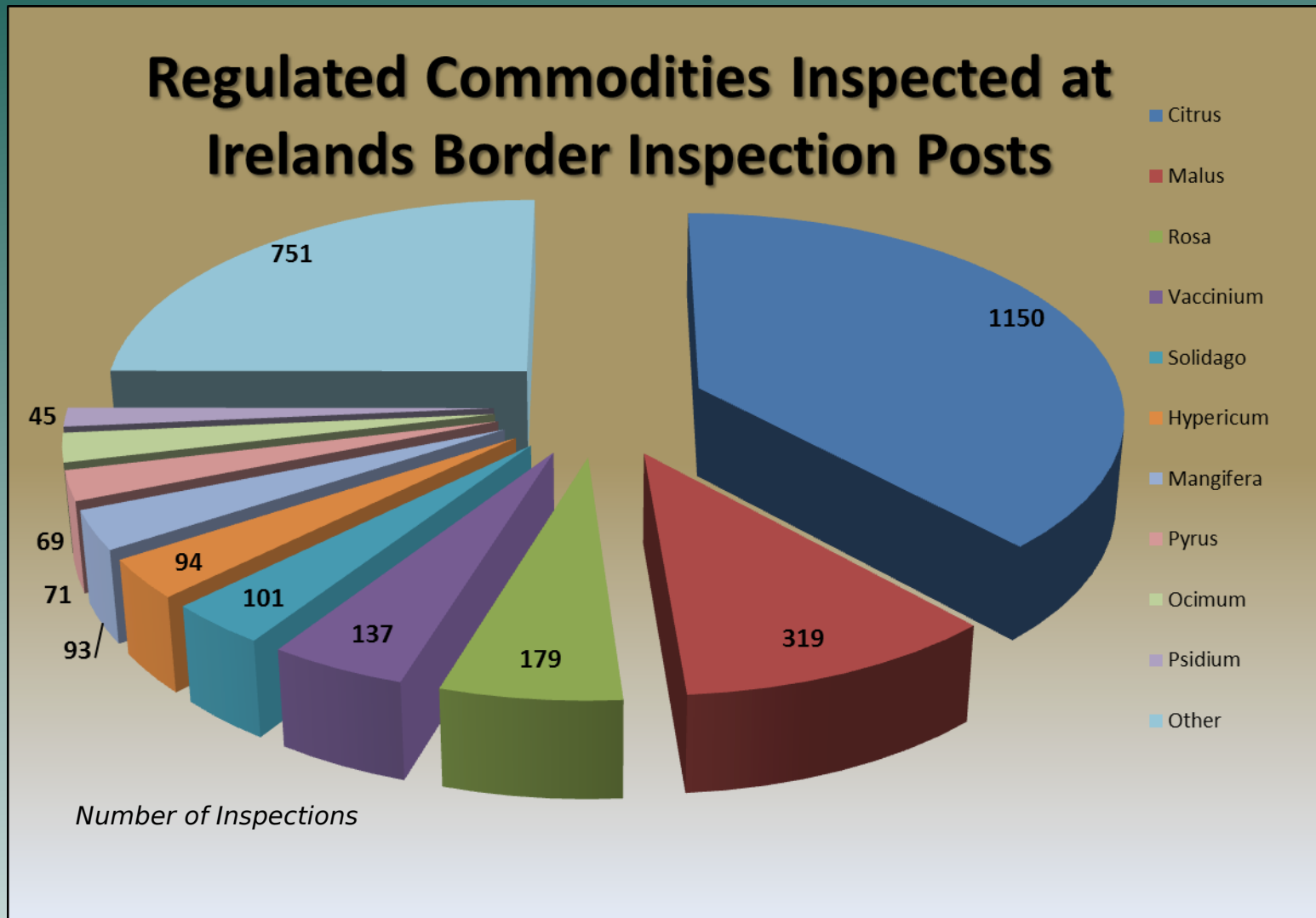
- DAFM's role in Plant Health
- *Xylella fastidiosa*
- What can you do to help Ireland's Bio-security status?
- DAFM's Plant Health Strategy
 - Awareness Raising
- BREXIT & DAFM
- NDP Grant Scheme

Department of Agriculture, Food & the Marine

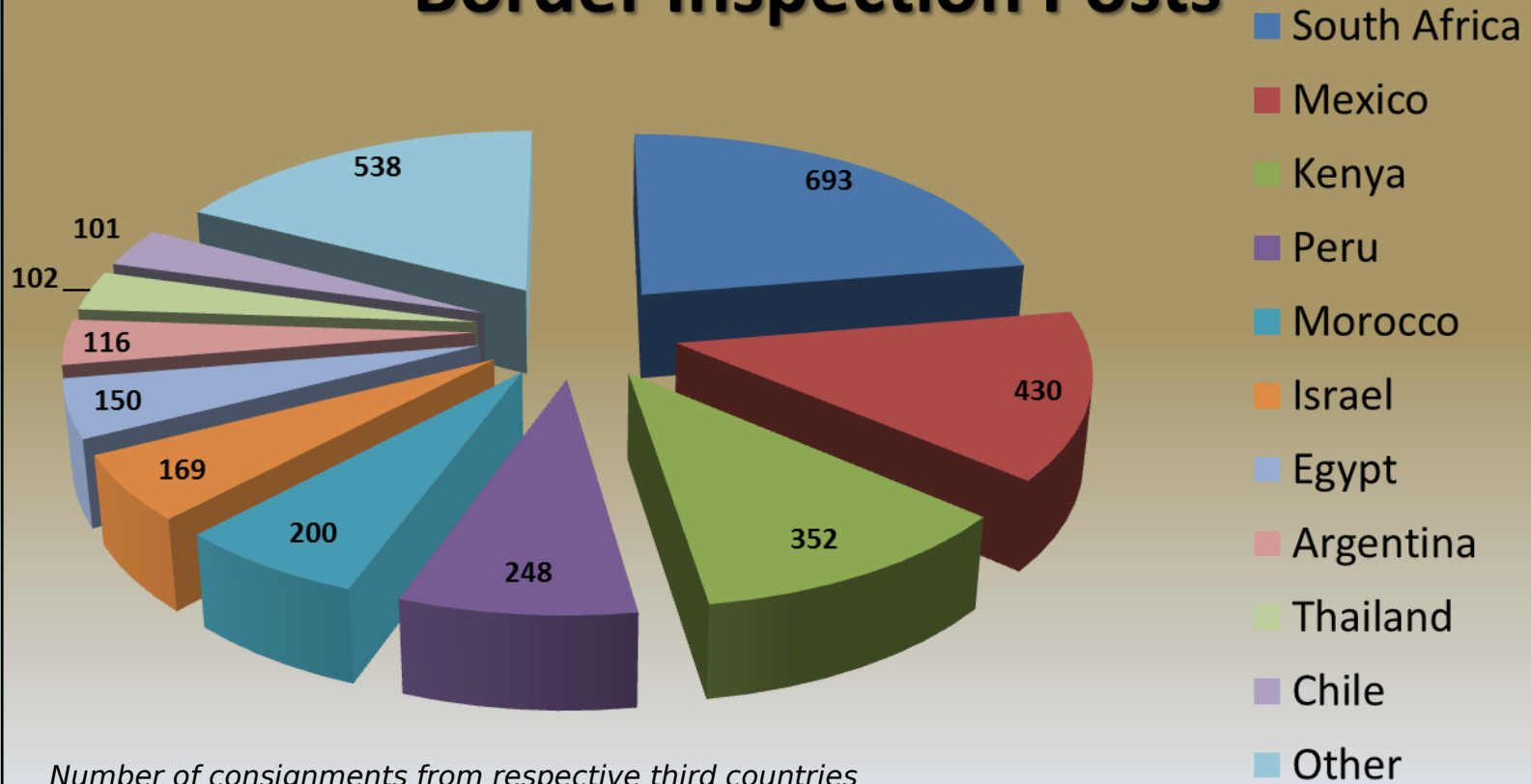
- General Plant Health principles are based on:
 - provisions laid down in **the FAO International Plant Protection Convention (IPPC)**
 - WTO Agreement on Sanitary and Phytosanitary Measures (“SPS Agreement”)
- EU Plant Health Legislation
 - Physical checks at borders - Third Countries
 - Regulated Plants & Plant Products
 - Non regulated
 - Pest & Disease surveys



Worldwide Regulated Plant & Plant Product Import Controls



Third Country Import Inspections at Border Inspection Posts



Worldwide Irish Horticulture Exports



Countries of Export

- Australia
- Bahrain
- Barbados
- Canada
- Canary Islands
- Chile
- China
- Dubai
- Egypt
- Hong Kong
- Iceland
- India
- Iran
- Israel
- Ivory Coast
- Japan
- Korea
- Kosovo
- Mongolia
- Morocco
- New Zealand
- Norway
- Oman
- Philippines
- Qatar
- Singapore
- South Africa
- South Korea
- Sri Lanka
- Tahiti
- Taiwan
- Tanzania
- Thailand
- Turkey
- USA
- UAE
- Ukraine
- Uzbekistan
- Europe

Commodities

- Potatoes
- Beans
- Peat
- Fruit
- Seeds
- Grain
- Vegetables
- Seaweed
- Horse Feed
- Daffodils
- Live Plants

Commercial Value of Regulated product to the EU €249m*

Commercial Value of Regulated product to Third Countries €7m*

*statistics based on 2015 CSO data

THREATS OF CONCERN

- 22 Protected Zones (PZ) , 17 Emergency Decisions
- *Xylella fastidiosa* (ED)
Wide host range
- Citrus longhorn Beetle - *Anoplophora chinensis* (ED)
Wide host range native trees

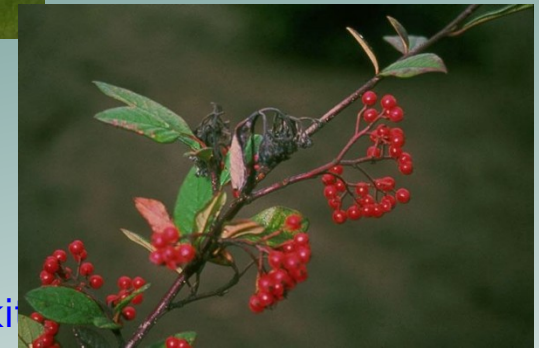


- *Phytophthora ramorum* (ED)
Rhododendron sp
Wide host range

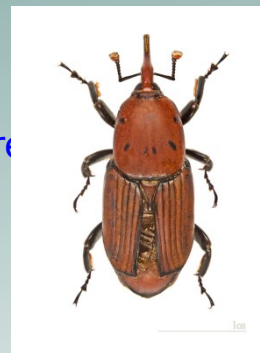


- Fireblight - *Erwinia amylovora* (ED)
Rosaceae sp

- Red Palm Weevil -
Rhyncophorus ferrugineus (PZ)
- Horizon Scanning



- For further information www.agriculture.gov.ie



Internal Controls

Annual Survey for 22 PZ Pests and Diseases

350

samples
taken for

Xylella
fastidiosa

600 inspections for *Anoplophora glabripennis*

Nurseries, Garden Centres, Public Parks & Private
Gardens intensively surveyed

1,643 inspections for Colorado Beetle

32 County **All Ireland approach** *Phytophthora ramorum*
450 samples

600 inspections for
Anoplophora chinensis

1,200 inspections
for *Bemisia tabacii*

1,400 samples analysed for *Erwinia*
amylovora

Xylella fastidiosa

- **Originated in the Americas**

- 1987 - USA
- 1993 - Brazil

- **Europe**

- 2013 – Apulia, Italy
- 2015 – France
- 2016 – Saxony, Germany
- 2016 – Balearic Islands
- 2017 – Alicante, mainland Spain

- Introduced into Europe on imported **coffee plants** from Central America
- Exclusively transmitted by **xylem-fluid feeding insects**
- **Sharpshooters**, primary vectors in California and Brazil
- **Meadow spittlebug**, primary vector in Europe
- Affects a wide range of host plants with
 - 359 species
 - 204 genera
 - 75 families



Philaenus spumarius. Image Courtesy of Wikipedia.



Homalodisca vitripennis. Image Courtesy of USDA.



Acrogonia terminalis. Image Courtesy of Wikipedia.



Xylella fastidiosa – most susceptible hosts



Coffea.

Image courtesy of Wikipedia



Lavandula dentata.

Image courtesy of Wikipedia



Nerium oleander.

Image courtesy of Britannica.com



Polygala myrtifolia.

Image courtesy of wikipedia.org



Prunus dulcis.

Image courtesy of Organic Facts



Olea europaea

Xylella fastidiosa

- Most likely route of entry into Ireland
 - The trade of plants particularly high risk host
 - Accidental introduction: Tourism
- 4 subspecies of Xf
 - the cold-tolerant subspecies *ssp. multiplex* potentially of most concern
- Native species which may be affected
 - Impossible to predict
- Insect vectors which may transmit the bacteria:
 - Meadow Spittle Bug
 - All xylem-feeding Hemiptera may be potential hosts



ARE WE *Xf* READY?

Annual surveys for presence of *Xf* on the entire list of specified plants listed in Annex I of Decision (EU) 2017/2352

Plant passports for all hosts

CONTROL MEASURES

- Est. of demarcated area
- Infected zone
- Buffer zone
 - 5km surrounding infected zone



NO ENTRY

ERADICATION MEASURES

- Removal and destruction of host plants of *Xf* found within 100m of the infected plants
- Regardless of health status
- Intensive surveillance within 5km of infected zone

CONTAINMENT MEASURES

- Only if bacterium established and impossible to eradicate
- Within 5km buffer zone full eradication measures apply

MOVEMENT OF PLANTS FROM DEMARCATED AREAS

- Only if grown in authorised sites, under protected conditions
- Tested prior to movement
- Notification of destination issued

What can you do to help?

To prevent spread of all pests and diseases

- Familiarise yourselves with the risks
- Buy Irish or alternatively buy from reputable source
- Know where the plants originated from
- Seek guarantees from your supplier
- Know plant passport requirements
 - PZ requirements
 - Example for FB host
IRL/DAFM/4321/Batch no:101/18 ZP b2
- Teagasc “Code of Practice” for plant health
- DAFM Plant Health Inspector

DAFM Plant Health Strategy (Draft)

- A more effective, efficient, harmonised and co-ordinated framework within DAFM and with stakeholders for the organisation of all activities on Plant Health
- Preparedness for new Plant Health and Biosecurity challenges, threats and new official Control and Plant Health Laws.
- Greater awareness among stakeholder and the general public about the importance of Biosecurity and Plant Health for Ireland.
- To facilitate economic growth and trade, enhance resilience & biodiversity, protect the environment, forests and associated ecosystems.

Plant Health Awareness Raising Strategy

- New Plant Health Regulation / DAFM Strategic Objectives
- Communication with Industry / Public
 - Trader notices - *Xylella f.* update
 - DAFM website www.agriculture.gov.ie/dontriskit/
 - Bloom “Don’t Risk it!” , Glas, Teagasc open days
 - Twitter
 - Plant Health Network – DAFM, Teagasc, IFA, IHNSA, Bord Bia
 - Working with Teagasc on “Industry Voluntary Code of Practice”
 - Stakeholder consultation



BREXIT & Actions DAFM are taking for the Industry

- Brexit Response Committee - overall co-ordination
- Dedicated Brexit Unit
- Consultative Committee of Stakeholders
- Brexit standing item on FW2025 HLIC agenda
- Intensifying North-South and East-West co-operation
- Raising awareness of Irish position with EU Member States and with EU institutions
- Feeding into whole-of-Government response (including All-Island Civic Dialogue)

NDP Grant Scheme

- The Scheme of Investment Aid for the Development of the Commercial Horticulture Sector aims to: -
 - promote diversification
 - improve quality
 - facilitate environmentally friendly practises
 - improve working conditions
- Funding 40% Funding (50% in the case of young growers / farmers)
- Since 2008, €7.3 to the Nursery Stock and related Amenity Plant Sectors. €18.25 million entire sector
- 2018 €1.9 million Nursery Stock and related Amenity Plant Sectors (41 applicants)



Summary

- National Biosecurity is our No. 1 Priority
 - Border protection
 - Surveillance
- Greater Industry buy in
- DAFM New Plant Health Strategy
 - Awareness Raising and education is key to tackling challenges
- BREXIT - we are well prepared but is it enough?
- NDP Grant Scheme

Thank You

