



PITCHMARKING MACHINE



INSTRUCTION MANUAL AND SPARE PARTS LIST

BOWCOM
Florence Works
Brindley Road
cardiff
CF11 8TX

TEL: 029 2038 8349

FAX: 029 2034 3235

www.bowcom.com

e: info@bowcom.com

ATOM – INSTRUCTIONS FOR USE

**** ensure spray switch connected inside control box**

****ensure handle secure at chosen height**

- 1) Ensure power turned off on both pump isolator switch (on control panel) and spray switch (on handle bar). Also ensure that the gun spray lever is in the closed position.
- 2) Place 10 litre 'ready-mix' paint container directly on to the Atom – using **only Bowcom Atomic or Quantum** paint.
- 3) Replace the paint pail lid, with the holed / clipped lid attached to the Atom.
- 4) Ensure that the clip / lock hose above the spray gun is attached to the 'waste' bottle.
- 5) Fill cleaning bottle with tap water.
- 6) Ensure 'speed-bleed' direction tap (above spray gun) is in the side-ways position (lock-off).
- 7) The machine is now ready to prime.
- 8) Set the spray limit discs to the required line width. Ensure that the spray gun is set high enough for the paint spray to hit the spray discs.
- 9) Turn on the pump isolator switch (located on control panel) – observe the volt meter reading (12 volts). If too low, place battery on charge.
- 10) To activate pump, use the spray switch located on the handle bar.
- 11) To prime the pump: (with the pump activated). Slowly turn the 'speed-bleed' knob to the up-wards position, this will draw through the water & turn to paint in a couple of seconds, depositing the surplus mix into the 'waste' bottle. When paint appears in 'waste' bottle, turn the 'speed-bleed' knob back to central position 'lock-off'.
- 12) Switch off the pump spray switch on handle bars. Turn the 'speed-bleed' knob to downwards position. The ATOM is now ready to paint a line.
- 13) Re-activate the handle-bar spray switch. Then use the handle-bar spray lever to open & close the spray gun for instant start / stop technology.
- 14) **NB: When not marking a line for prolonged period, de-activate the pump by turning off the handle-bar spray switch.**
- 15) Atom Cleaning: Following completion of line-marking, switch off pump. Un-clip the paint suction tube coupling & place onto the 'water' bottle lid.
- 16) For full cleaning process: Repeat steps 6 – 12 above. (paint surplus can be either sprayed on to grass area or deposited into waste bottle (empty out intermittently).

- 17) Additional periodic cleaning: From time to time clean the ATOM using tap water drawn from a 10 litre empty (clean) paint container. This ensures cleanliness of suction tube & filter.
- 18) Nozzle cleaning: Following ATOM cleaning always remove & clean the 'top-hat' filter above the nozzle. Ensure clean & clear water is seen spraying from the nozzle. For additional nozzle cleaning soak overnight using 'Bowcom Multi-flush solution', preferably in an 'ultra-sonic' cleaning bath.
- 19) **NB. If using a part-used pail of 'Atom' or 'Quantum' paint, shake well before use.**
- 20) **Battery Charger:** Use Battery Charger provided. Place 3-pin plug into 240 volt mains socket. Plug other end (12 volt) into trailing socket inside the ATOM **Control Box** (connector fits only one way). A full charge will take up to 10 hours. Full battery should operate pump for several days (dependent on use).

Technical Information:-

| | |
|------------------------|------------|
| Paint tank capacity: | 10 litres |
| Water bottle capacity: | 0.5 litres |
| Weight – Dry, no tank: | 22 kg |

ATOM PARTS LIST

| Part No. | Description |
|-----------------------------|--|
| Metal Work | |
| 1000XM | Handle |
| 1049XA | Chassis Tube (left) c/w hose clip fixing |
| 1050XA | Chassis Tube (right) |
| 1002X | Inner chassis extension tube |
| 1004X | Gun Holder |
| 1042XA | Gun Top |
| - 80 + | Spray Gun |
| 1045XA | Spray arm bracket (L or R) |
| 1044XA | Spray arm |
| 1043XA | Spray disc |
| Plastics | |
| 1047XA | Atom Body |
| 1048XA | Control box door |
| | Water / waste bottle |
| 1020X | Paint tank lid c/w male coupler |
| Pump & Electrics | |
| 272M | Pump Complete |
| 987M | Pump Diaphragm |
| 509M | Battery |
| 510M | Battery Charger |
| 992X | Battery Gauge |
| Switches | |
| 984XA | Pump Isolator Switch |
| 1032XA | Spray Switch c/w box, cable & connectors |
| Filters | |
| 991X | Paint Hose Filter |
| 166ATM | Spray Housing Filter (top-hat) |
| Spray Head | |
| 278M | Spray cable |
| 1017X | Speed-bleed tap |
| 85GM | Union Nut |
| ZXS0020 | Nozzle (brass /gold) |
| 271M | Nozzle (white) |
| Hoses | |
| 986X | Clear PVC Hose |
| 987X | Spray Coil (standard) |

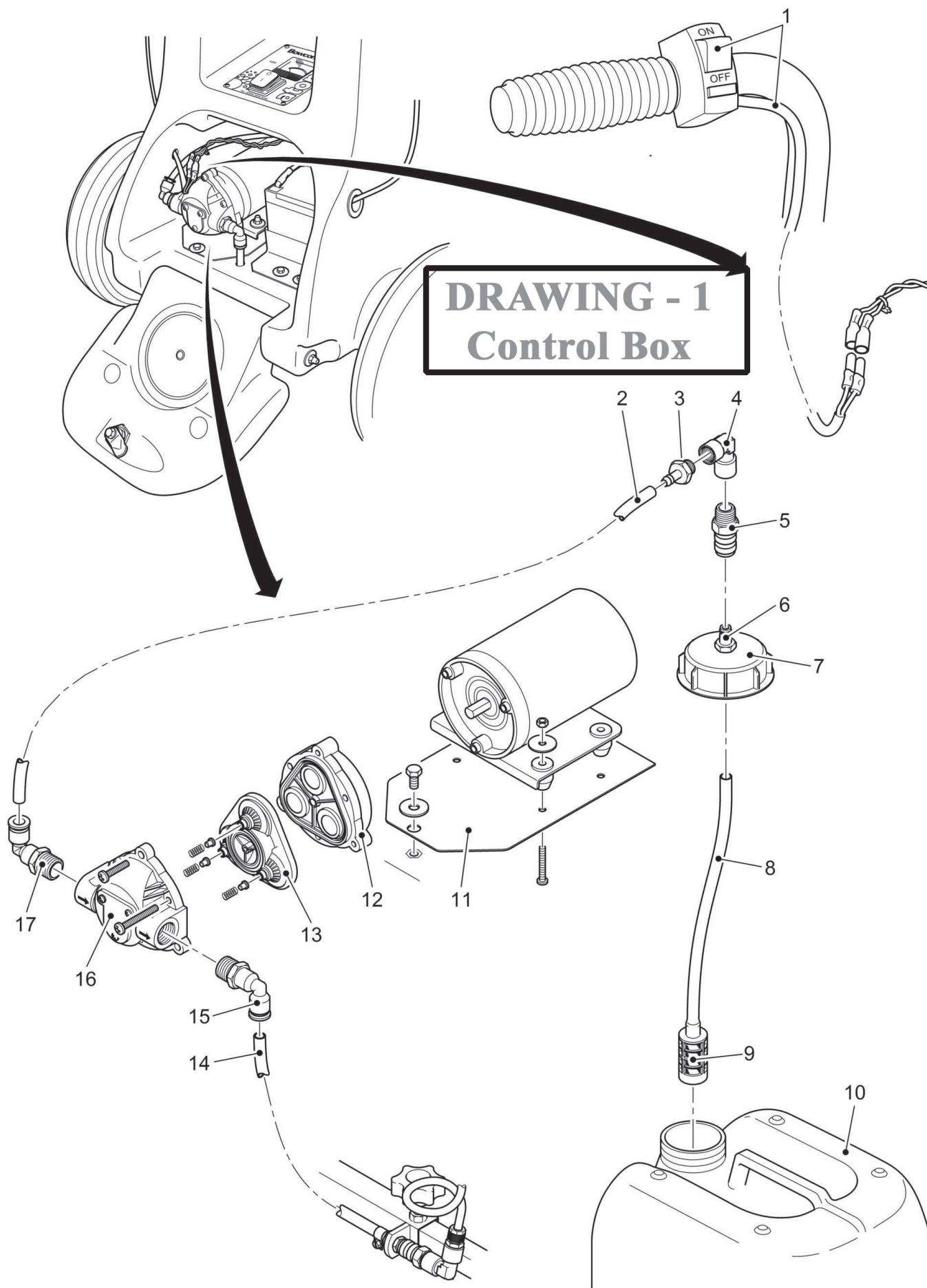
| Other Components | |
|------------------|-------------------------------|
| 1015X | Wheel |
| 24 | M8 Star Wheel |
| 1027X | Control Door Latch (complete) |

EXPLODED VIEW **CONTENT**

| | |
|---------------------------|------------------------------------|
| <i>Drawing -1-</i> | <i>Control Box</i> |
| <i>Drawing -2-</i> | <i>Dashboard & Axle</i> |
| <i>Drawing -3-</i> | <i>Spray Assembly</i> |

DRAWING -1- CONTROL BOX

| Item No. | Description | Part No. |
|-----------------|---|-----------------|
| 1 | Spray switch (inc. cable & bullet connectors) | 1032XA |
| 2 | Clear hose | 986M |
| 3 | Hose tail | 1021X |
| 4 | Elbow | 1023X |
| 5 | Female coupler | 1019X |
| 6 | Male coupler | 1020X |
| 7 | Holed lid | - |
| 8 | Clear hose | 986M |
| 9 | Tank filter | 991X |
| 10 | Empty paint pail | - |
| 11 | Pump mounting plate | 1051XA |
| 12 | Pump diaphragm drive | 984X |
| 13 | Pump diaphragm | 987M |
| 14 | Clear hose | 986M |
| 15 | Quick release elbow | 985M |
| 16 | Pump upper housing | 983X |
| 17 | Quick release elbow | 985M |

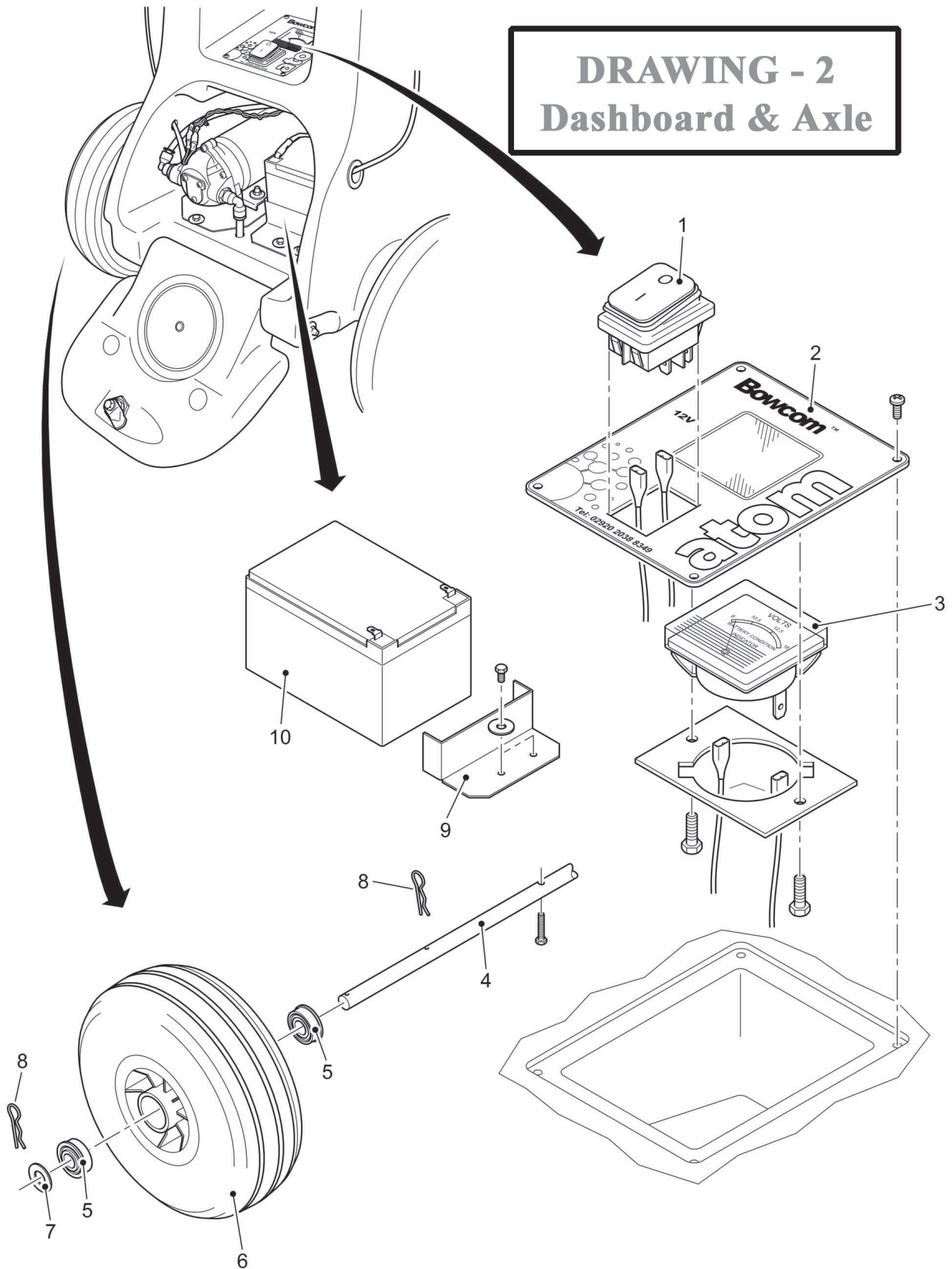


DRAWING -2- Dashboard & Axle

| Item No. | Description | Part No. |
|-----------------|------------------------------|-----------------|
| 1 | Pump Isolator Switch | 984XA |
| 2 | Dashboard (inc. gauge plate) | 1041XA |
| 3 | Battery Gauge | 992X |
| 4 | Axle | 1046XA |
| 5 | Wheel Bearing | 1014XB |
| 6 | Wheel (inc. tyre) | 1014X |
| 7 | Wheel washer | - |
| 8 | R-Clip | - |
| 9 | Battery Clamp | 1052XA |
| 10 | Battery | 509M |

DRAWING - 2

Dashboard & Axle



DRAWING -3- SPRAY ASSEMBLY

| Item No. | Description | Part No. |
|-----------------|-------------------------------------|-----------------|
| 1 | Rubber handle-bar grip | 8GB |
| 2 | Spray control lever | 7GB |
| 3 | Split-trunnion (Secures gun cable) | 11 |
| 4 | Gun cable | 278M |
| 5 | Speed-Bleed direction tap | 1017X |
| 6 | Hose tail | 1021X |
| 7 | Clear hose | 986M |
| 8 | Spray hose end | 1022X |
| 9 | Spray hose coil | 987X |
| 10 | Gun cable securing screw | 93 |
| 11 | Gun cable adjuster | 31 |
| 12 | Gun top | 1042XA |
| 13 | Gun top reducer | 988X |
| 14 | Spray gun | 80 |
| 15 | Top hat filter (fine) | 166ATM |
| 16 | Hollow cone nozzle (white) | 271M |
| 17 | Union Nut | 85 |
| 18 | Chassis box tube (left hand) | 1049XA |
| 19 | M8 star wheel | 24 |
| 20 | Spray hose end | 1022X |
| 21 | Elbow | 1023X |
| 22 | Inner chassis box tube | 1055XA |
| 23 | Clear hose | 986M |
| 24 | Mini-jubilee clip | - |
| 25 | Male coupler | 1020X |
| 26 | Female coupler | 1019X |
| 27 | Spray disc arm bracket (left hand) | 1045XA |
| 28 | Spray disc arm | 1044XA |
| 29 | Spray disc | 1043XA |
| 30 | Gun holder | 1004X |
| 31 | Spray disc arm bracket (right hand) | 1045XA |
| 32 | Spray bar | 1001XA |
| 33 | Chassis box tube (right hand) | 1050XA |
| 34 | Clean water bottle | - |
| 35 | Waste water bottle | - |

